

# 炭火焼肉 寿恵比呂

【Sumibi Yakiniku Suehiro (North Exit Branch)】

Our restaurant was founded in 1980 in front of Kinshicho Station. We have a sister shop by the South Exit of the station. We only use A5 rank Tochigi Wagyu beef.

[Address] 3-3-10 Kinshi, Sumida-ku, Tokyo [Tel] 03-3625-5978

[Access] 1 min walk from Kinshicho Station on the JR Sobu Line and the Tokyo Metro Hanzomon Line

[Open] 11:00am-5:00am (L.O. 4:00am) [Closed] No Holidays

<http://r.gnavi.co.jp/g746300/>



[Access] 1 min walk from Kinshicho Station on the JR Sobu Line and the Tokyo Metro Hanzomon Line

[Open] 11:00am-5:00am (L.O. 4:00am) [Closed] No Holidays



## Assortment 盛り合わせ

- 1 Assortment of 7 Popular Dishes** ¥3,780  
人気メニュー7点盛り

## Beef 牛肉

- 2 Galbi (Korean-Style Boneless Grilled Short Ribs)** ¥1,058  
カルビ
- 3 Short Loin** ¥1,058  
ロース
- 4 High-Quality Salted Beef Tongue** ¥1,728  
上タン塩
- 5 Beef Liver** ¥702  
レバー
- 6 Beef Tripe** ¥1,026  
ミノ
- 7 Beef Offal (4th Stomach)** ¥734  
ホルモン
- 8 High-Quality Galbi (Korean-Style Boneless Grilled Short Ribs)** ¥2,138  
上カルビ
- 9 Rump (in Garlic Butter)** ¥1,620  
ランプ (ガーリックバター)
- 10 Sirloin** ¥2,700  
サーロイン

## Pork 豚肉

- 11 Pork Belly** ¥683  
豚バラ
- 12 Fatty Pork (Neck Meat)** ¥683  
豚トロ

## Chicken 鶏肉

- 13 Spring Chicken** ¥683  
若鶏



1 Assortment of 7 Popular Dishes



2 Galbi



3 Short Loin



20 Kimchi Assortment

## Seafood 海鮮

- 14 Shrimp** ¥1,058  
エビ
- 15 Squid** ¥702  
イカ
- 16 Scallops** ¥1,058  
ホタテ
- 17 Grilled Seafood** ¥1,782  
海鮮焼き

## Vegetables 野菜

- 18 Grilled Vegetables** ¥702  
野菜焼き

## À la Carte Dishes 一品料理

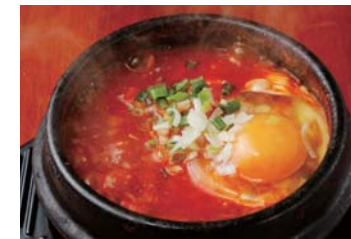
- 19 Chinese Cabbage Kimchi** ¥518  
白菜キムチ
- 20 Kimchi Assortment (4 Kinds)** ¥1,058  
キムチ盛り合せ
- 21 Seafood Korean-Style Pancake** ¥1,296  
海鮮チヂミ

## Rice/Noodles ごはん・麺

- 22 Galbi Gukbap (Rice Porridge with Korean-Style Boneless Grilled Short Ribs)** ¥918  
カルビクッパ
- 23 Sundubu Jjigae (Korean-Style Tofu Hot Pot)** ¥810  
純豆腐
- 24 Korean-Style Cold Noodles** ¥1,058  
冷麺



21 Seafood Korean-Style Pancake



23 Sundubu Jjigae



24 Korean-Style Cold Noodles

◎Tax is not included



We accept a credit card of VISA, MASTER, AMERICAN EXPRESS, JCB and China UnionPay.

▶ The picture may be different from the actual dish due to the use of seasonal ingredients

## 10 major allergy materials



▶ For descriptions of specific food allergens, please see the back of the menu